

# PARTS LIST

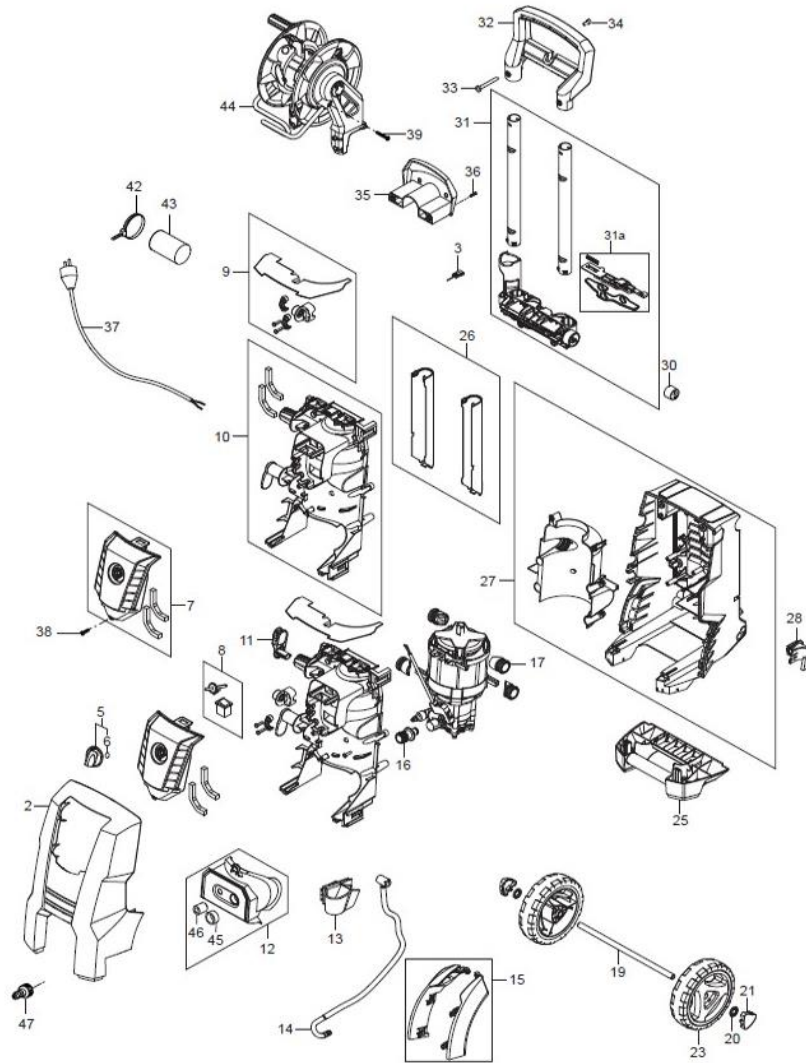
2025.09.10

# NILFISK

# TABLE OF CONTENTS

---

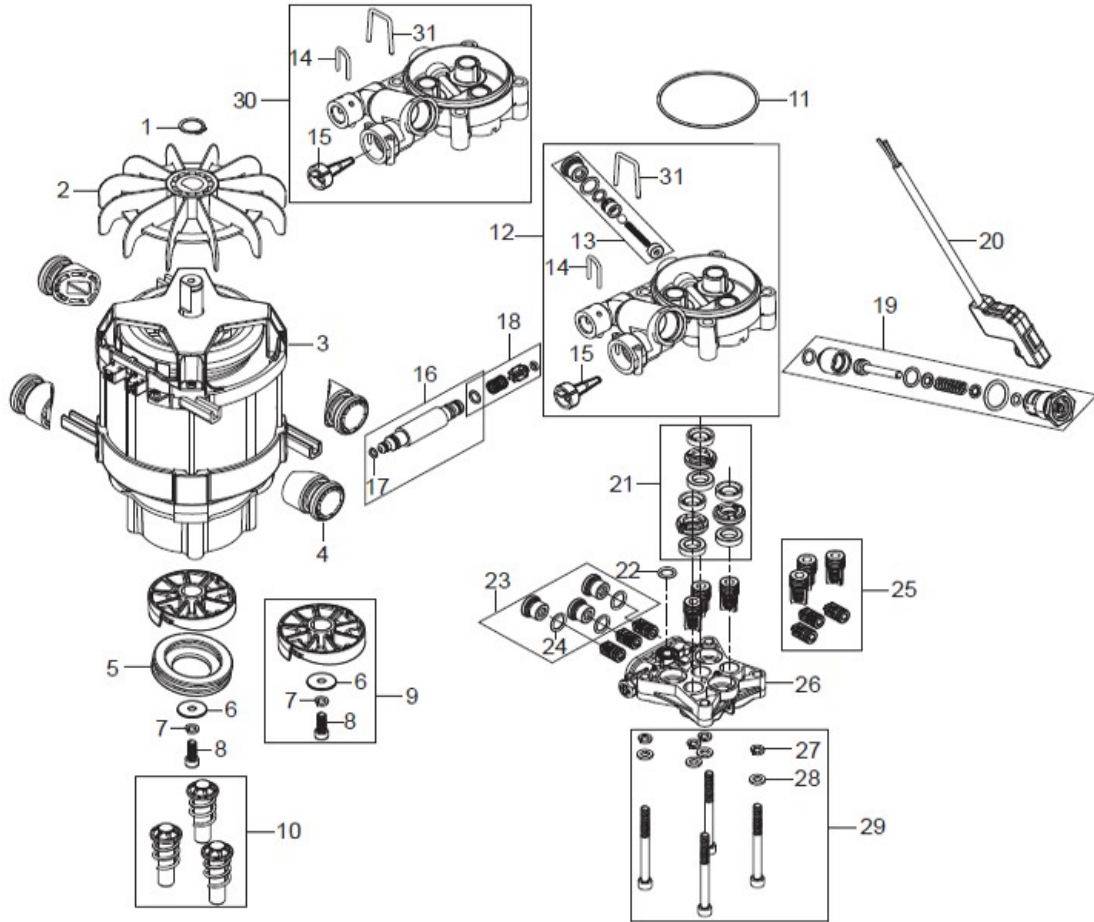
|   |   |
|---|---|
| OVERVIEW.....                             | 1 |
| MOTOR PUMP.....                           | 3 |
| Hose Reel .....                           | 5 |
| PL_128471500_RECOMMENDED SPARE PARTS..... | 7 |



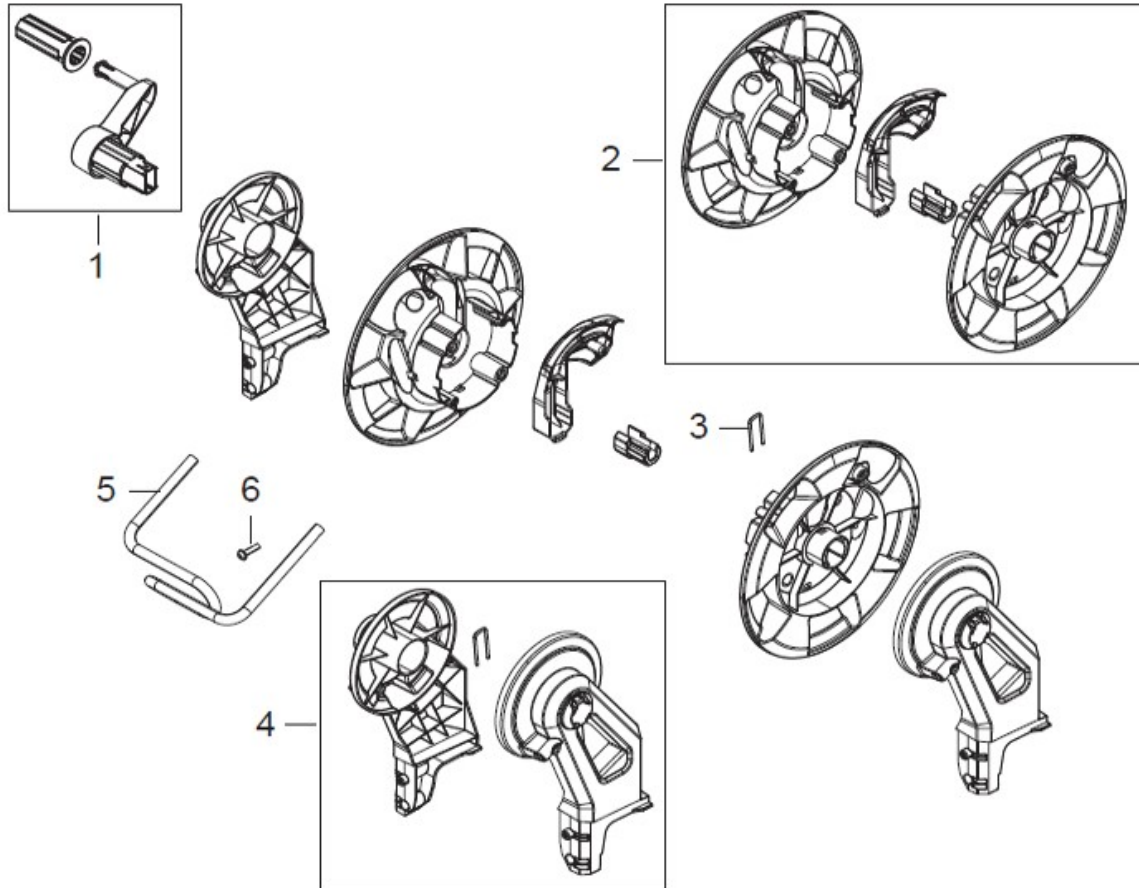
| Pos. | Artikel-Nr. | Menge | Variante                                 | Notes |
|------|-------------|-------|--|-------|
| 2    | 128502069   | 1     | FRONT CABINET W PRINT MC1C               |       |
| 2    | 128501160   | 1     | FRONT CABINET W. PRINT E150.2            | [1]   |
| 3    | 6520844     | 1     | Reinigungsnadel                          |       |
| 5    | 128502070   | 1     | SWITCH KNOB BRIGHT BLUE                  |       |
| 5    | 128500547   | 1     | DREHKNOPF BLAU                           | [1]   |
| 6    | 9868        | 1     | O-Ring 10x2,5                            |       |
| 7    | 128500928   | 1     | SWITCH BOX                               | [1]   |
| 7    | 128502077   | 1     | SWITCH BOX COVER                         |       |
| 9    | 128500815   | 1     | CABLE RELIFE KIT                         |       |
| 10   | 128500927   | 1     | FRONT STRUCTURAL WITH GASKET             |       |
| 8    | 128500507   | 1     | EA-Schalter inkl. Achse                  |       |
| 11   | 128500549   | 1     | Kabelhaken                               | [1]   |
| 11   | 128502071   | 1     | ROTARY CABLE HOOK BRIGHT BLUE            |       |
| 12   | 128500551   | 1     | Ein-/Auslass Abdeckung schwarz Xtra      |       |
| 12   | 128500550   | 1     | Ein-/Auslass Abdeckung schwarz standard  |       |
| 13   | 128500512   | 1     | Lanzenhalter                             |       |
| 14   | 128500513   | 1     | HD-Verbindungsschlauch X-Tra Consumer HD |       |
| 15   | 128500514   | 1     | Radkästen                                |       |
| 16   | 128502074   | 1     | WATER INLET NA01                         |       |
| 19   | 128500517   | 1     | Radachse                                 |       |
| 17   | 128500604   | 4     | VIBRATION DAMPER                         |       |
| 20   | 127440210   | 1     | Sprengring Set                           |       |
| 23   | 128500553   | 1     | Rad                                      | [1]   |
| 21   | 128500552   | 1     | Radkappe                                 | [1]   |
| 23   | 128502076   | 1     | WHEEL CAP                                |       |
| 25   | 128500520   | 1     | Fußstück                                 |       |
| 26   | 128500521   | 1     | Abdeckung Teleskopgriff (Set)            |       |
| 27   | 128500522   | 1     | Hintere Abdeckung E130                   |       |
| 28   | 128500523   | 1     | HALTERUNG FÜR LANZE OBEN                 |       |
| 30   | 128502075   | 1     | HANDLE LOCK BUTTON BRIGHT BLUE           |       |
| 31   | 128500931   | 1     | HANDLE TUBE AND ACC STORAGE              |       |
| 31   | 128500932   | 1     | SPRING FOR LOCK                          |       |
| 32   | 128500527   | 1     | Handgriff                                |       |
| 33   | 128500528   | 1     | NUT FOR HANDLE LOCK                      |       |
| 34   | 128500529   | 1     | SCHRAUBE M4X8 ISO7045 A2-50-H PH         |       |
| 35   | 128500530   | 1     | HD-Schlauchhaken                         |       |
| 36   | 1814732     | 2     | Ejotschraube KB50x18                     |       |
| 37   | 128500822   | 1     | POWER CABLE EU                           |       |
| 37   | 128500881   | 1     | POWER CABLE PVC AU/NZ                    | [2]   |
| 38   | 107141838   | 33    | SCHRAUBE K50X18 WN1451 SCHWARZ TORX 20   |       |
| 39   | 128500595   | 2     | SCREW K50X35 WN1452 BLACK TORX           |       |
| 42   | 1814741     | 1     | Kabelbinder                              |       |
| 43   | 128500636   | 1     | Kondensator 25µF 500V                    |       |
| 43   | 128500795   | 1     | CAPACITOR 25MF W PY PLUG                 |       |
| 44   | 128500531   | 1     | HOSE REEL COMPLETE                       |       |
| 45   | 128500578   | 1     | INLET GASKET                             |       |
| 46   | 128500579   | 1     | OUTLET GASKET                            |       |
| 47   | 128502073   | 1     | WATER INLET MALE COUPLING                |       |
| 30   | 128500554   | 1     | HANDLE LOCK BUTTON BLUE                  |       |
| 44   | 128502072   | 1     | HOSE REEL COMPLETE                       |       |
| 47   | 106404529   | 1     | GARDENA COUPLING MALE 3/4                | [1]   |

## Part Notes:

- [1] - Old MC1C part  
 [2] - STOCK COVERS GUARANTEE



| Pos. | Artikel-Nr. | Menge | Variante  | Notes |
|------|-------------|-------|---|-------|
| 1    | 127500051   | 1     | Sicherungsring  |       |
| 2    | 127500040   | 1     | Lüfterrad   |       |
| 3    | 128500601   | 1     | MOTOR 230V/50HZ 2.1KW   |       |
| 4    | 128500604   | 4     | VIBRATION DAMPER  |       |
| 5    | 128500605   | 1     | THRUST BALL BEARING   |       |
| 6    | 127130066   | 1     | Beilagsscheibe D22X6,4X1,   |       |
| 7    | 127500050   | 1     | Federscheibe  |       |
| 8    | 128500608   | 1     | SCREW M6X16 10.9 FZB ISO4762  |       |
| 9    | 128500615   | 1     | Satz Taumelscheibe 10,3 Grad  |       |
| 10   | 128500616   | 1     | PISTON COMPLETE KIT 3PCS  |       |
| 11   | 127440078   | 1     | O-Ring 72x2 SH90  |       |
| 12   | 128500618   | 1     | Zylinderblock Consumer HDR  |       |
| 13   | 128500619   | 1     | Easy Start Kit  |       |
| 14   | 128500620   | 1     | U-PIN OUTLET  |       |
| 15   | 128500195   | 1     | Sieb  |       |
| 16   | 128500622   | 1     | Ausgangsstück Schnellverschluss   |       |
| 17   | 3004304     | 1     | O-Ring 5,1x1,6 Viton  |       |
| 18   | 128500624   | 1     | Rückschlagventil  |       |
| 19   | 128501513   | 1     | START/STOP VALVE D.2.95 - REV. 2 - NA01START/STOP VALVE<br>D.2.95 - REV. 2 - NA01 [1] |       |
| 20   | 128500628   | 1     | MICROSWITCH BOX COMPLETEMICROSWITCH BOX COMPLETE [2]                                  |       |
| 21   | 128500993   | 1     | Dichtungssatz Kolben  |       |
| 22   | 128500630   | 1     | O-RING 10.0X2.2 NBR 90  |       |
| 23   | 128500851   | 1     | PRESSURE VALVE PLUG KIT   |       |
| 24   | 127440085   | 3     | O-RING 11.7X2.0 SH90  |       |
| 25   | 128500855   | 1     | INLET OUTLET VALVE 6PCS   |       |
| 26   | 128501323   | 1     | CYLINDERHEAD AND SCREW  |       |
| 27   | 127500029   | 4     | Beilagsscheibe  |       |
| 28   | 127500050   | 4     | Federscheibe  |       |
| 29   | 127500071   | 1     | SCHRAUBE M6X70 DIN 912 4STÜCK   |       |
| 30   | 128500634   | 1     | CYLINDERBLOCK KIT   |       |
| 31   | 128500675   | 1     | U-PIN INLET   |       |



| <b>Pos.</b> | <b>Artikel-Nr.</b> | <b>Menge</b> | <b>Variante</b>                      | <b>Notes</b> |
|-------------|--------------------|--------------|--------------------------------------|--------------|
| 1           | 128502094          | 1            | Handgriff für Schlauchaufroller MC1C |              |
| 2           | 128500591          | 1            | Schlauchtrommel kit                  |              |
| 3           | 128500592          | 1            | LOCK KIT                             |              |
| 4           | 128500593          | 1            | Schlauchtrommelhalter                |              |
| 5           | 128500594          | 1            | HOSE GUIDE BRACKET                   |              |
| 6           | 128500595          | 2            | SCREW K50X35 WN1452 BLACK TORX       |              |

| BOOK E                        |                             |     | RICAMBI CONSIGLIATI / RECOMMENDED SPARE PARTS | 2005-10 |
|-------------------------------|-----------------------------|-----|---|---------|
| E                             | 17.3.1                      | 52  | BR 601 / 651 / 751 - 751C / EDS               | 2007-10 |
| Ref. No.                      | DESCRIPTION                 | QTY | MACHINES                                      |         |
| <b>RECOVERY TANK</b>          |                             |     |   |         |
| 909 6489 000                  | GASKET VACUUM MOTOR         | 1   | BR 601 - BR 651 - BR 751 - BR 751C - EDS      |         |
| 9097466000                    | MOTOR VACUUM KIT            | 1   | BR 601 - BR 651 - BR 751 - BR 751C - EDS      |         |
| 9097399000                    | FILTER                      | 1   | BR 601 - BR 651 - BR 751 - BR 751C - EDS      |         |
| 909 6490 000                  | GASKET VACUUM MOTOR         | 1   | BR 601 - BR 651 - BR 751 - BR 751C - EDS      |         |
| 909 6096 000                  | HOSE DRAIN BLACK            | 1   | BR 601 - BR 651 - BR 751 - BR 751C - EDS      |         |
| 909 6097 000                  | HOSE VACUUM BLACK           | 1   | BR 601 - BR 651 - BR 751 - BR 751C - EDS      |         |
| 909 6268 000                  | GASKET L=1370 MM            | 1   | BR 601 - BR 651 - BR 751 - BR 751C - EDS      |         |
| L08812968                     | GASKET                      | 1   | BR 601 - BR 651 - BR 751 - BR 751C - EDS      |         |
| L08812373                     | FLOATING BALL               | 1   | BR 601 - BR 651 - BR 751 - BR 751C - EDS      |         |
| L08812259                     | CAGE FLOATING BALL          | 2   | BR 601 - BR 651 - BR 751 - BR 751C - EDS      |         |
| 909 6380 000                  | HARDWARE CLAMP KIT          | 1   | BR 601 - BR 651 - BR 751 - BR 751C - EDS      |         |
| 909 5371 000                  | CARBON BRUSH                | 2   | BR 601 - BR 651 - BR 751 - BR 751C - EDS      |         |
| <b>CHASSIS SYSTEM</b>         |                             |     |   |         |
| L08812248                     | BUMPER ROLLER               | 1   | BR 601 - BR 651 - BR 751 - BR 751C - EDS      |         |
| 145 2612 000                  | PULLEY                      | 2   | BR 601 - BR 651 - BR 751 - BR 751C - EDS      |         |
| 909 6895 000                  | WHEEL REAR D.300 BLUE       | 2   | BR 601 - BR 651 - BR 751 - BR 751C - EDS      |         |
| 909 6715 000                  | JACK MOTOR 24V              | 1   | BR 601 - BR 651 - BR 751 - BR 751C - EDS      |         |
| 909 6151 000                  | CABLE                       | 1   | BR 601 - BR 651 - BR 751 - BR 751C - EDS      |         |
| 909 6365 000                  | HARDWARE CABLE FIXING KIT   | 1   | BR 601 - BR 651 - BR 751 - BR 751C - EDS      |         |
| 909 6718 000                  | CABLE SQUEEGEE KIT          | 1   | BR 601 - BR 651 - BR 751 - BR 751C - EDS      |         |
| <b>FRONT WHEEL ASSEMBLY</b>   |                             |     |   |         |
| 909 5942 000                  | BALL BEARING                | 1   | BR 601 - BR 651 - BR 751 - BR 751C - EDS      |         |
| 909 5943 000                  | PINION STEERING             | 1   | BR 601 - BR 651 - BR 751 - BR 751C - EDS      |         |
| 909 6121 000                  | SENSOR                      | 1   | BR 601 - BR 651 - BR 751 - BR 751C - EDS      |         |
| 9096931000                    | MOTOR WHEEL W600 24V        | 1   | BR 601 - BR 651 - BR 751 - BR 751C - EDS      |         |
| 145 2330 000                  | GREASER NIPPLE M6           | 1   | BR 601 - BR 651 - BR 751 - BR 751C - EDS      |         |
| 145 4691 000                  | BALL BEARING                | 1   | BR 601 - BR 651 - BR 751 - BR 751C - EDS      |         |
| 9096928000                    | WHEEL DRIVE KIT             | 1   | BR 601 - BR 651 - BR 751 - BR 751C - EDS      |         |
| 9096927000                    | HARNESS DRIVE WHEEL         | 1   | BR 601 - BR 651 - BR 751 - BR 751C - EDS      |         |
| <b>MOTOR DRIVE WHEEL</b>      |                             |     |   |         |
| 9096935000                    | WHEEL D.250                 | 1   | BR 601 - BR 651 - BR 751 - BR 751C - EDS      |         |
| 9096959000                    | BALL BEARING KIT            | 1   | BR 601 - BR 651 - BR 751 - BR 751C - EDS      |         |
| 9096976000                    | SHOE BRAKE                  | 1   | BR 601 - BR 651 - BR 751 - BR 751C - EDS      |         |
| 9096960000                    | CARBON BRUSH KIT            | 1   | BR 601 - BR 651 - BR 751 - BR 751C - EDS      |         |
| 9096966000                    | BRAKE ELECTRICALLY RELEASED | 1   | BR 601 - BR 651 - BR 751 - BR 751C - EDS      |         |
| <b>STEERING SYSTEM</b>        |                             |     |   |         |
| 909 6074 000                  | CABLE                       | 1   | BR 601 - BR 651 - BR 751 - BR 751C - EDS      |         |
| 146 2458 000                  | LEVER                       | 1   | BR 601 - BR 651 - BR 751 - BR 751C - EDS      |         |
| 145 9290 000                  | SPRING                      | 1   | BR 601 - BR 651 - BR 751 - BR 751C - EDS      |         |
| <b>CONTROL PANEL ASSEMBLY</b> |                             |     |   |         |
| 146 2888 000                  | SWITCH KEY WITH CAP         | 1   | BR 601 - BR 651 - BR 751 - BR 751C - EDS      |         |
| 146 1727 000                  | SWITCH EMERGENCY            | 1   | BR 601 - BR 651 - BR 751 - BR 751C - EDS      |         |
| 146 1728 000                  | CONTACT NC.                 | 1   | BR 601 - BR 651 - BR 751 - BR 751C - EDS      |         |
| 909 6077 000                  | CARD ELECTRONIC             | 1   | BR 601 - BR 651 - BR 751 - BR 751C - EDS      |         |
| 909 6078 000                  | DECAL CONTROL PANEL         | 1   | BR 601 - BR 651 - BR 751 - BR 751C            |         |
| 909 6184 000                  | DECAL CONTROL PANEL -EDS    | 1   | BR 601 - BR 651 - BR 751 - BR 751C - EDS      |         |
| 146 2887 000                  | KEY (2PCS)                  | 1   | BR 601 - BR 651 - BR 751 - BR 751C - EDS      |         |
| <b>PEDAL ASSEMBLY</b>         |                             |     |   |         |
| 146 2480 000                  | HARNESS PEDAL               | 1   | BR 601 - BR 651 - BR 751 - BR 751C - EDS      |         |
| 146 2952 000                  | PEDAL COMPLETE KIT          | 1   | BR 601 - BR 651 - BR 751 - BR 751C - EDS      |         |
| <b>SOLUTION SYSTEM</b>        |                             |     |   |         |
| 909 6389 000                  | CAP F 1/2 KIT               | 1   | BR 601 - BR 651 - BR 751 - BR 751C - EDS      |         |
| 909 6390 000                  | HOSE KIT                    | 1   | BR 601 - BR 651 - BR 751 - BR 751C - EDS      |         |
| 909 5215 000                  | NET & GASKET WATER FILTER   | 1   | BR 601 - BR 651 - BR 751 - BR 751C - EDS      |         |
| 9096954000                    | VALVE                       | 1   | BR 601 - BR 651 - BR 751 - BR 751C - EDS      |         |
| 909 5205 000                  | SOLENOID VALVE 24V          | 1   | BR 601 - BR 651 - BR 751 - BR 751C - EDS      |         |
| 909 5207 000                  | FILTER WATER                | 1   | BR 601 - BR 651 - BR 751 - BR 751C - EDS      |         |
| 909 6328 000                  | HOSE L=730MM                | 1   | BR 601 - BR 651 - BR 751 - BR 751C - EDS      |         |
| 909 6091 000                  | SENSOR PRESSURE             | 1   | BR 601 - BR 651 - BR 751 - BR 751C - EDS      |         |
| <b>SQUEEGEE SYSTEMS</b>       |                             |     |   |         |
| 909 6223 000                  | HANDWHEEL M8X45             | 1   | BR 601 - BR 651 - BR 751 - BR 751C - EDS      |         |
| 909 6394 000                  | SQUEEGEE LATCH KIT          | 1   | BR 601 - BR 651 - BR 751 - BR 751C - EDS      |         |
| 9096973000                    | TENSION ROD FITTING KIT     | 4   | BR 601 - BR 651 - BR 751 - BR 751C - EDS      |         |
| L08603880                     | KIT BUMPER ROLLER           | 1   | BR 601 - BR 651 - BR 751 - BR 751C - EDS      |         |
| 9097499000                    | KIT SQUEEGEE BLADE 32"      | 1   | BR 601 - BR 651 - EDS                         |         |
| 9097500000                    | KIT SQUEEGEE BLADE 34"      | 1   | BR 751 - BR 751C - EDS                        |         |
| L08603675                     | THUMB NUT SQUEEGEE FIXING   | 2   | BR 601 - BR 651 - BR 751 - BR 751C - EDS      |         |
| 909 6161 000(5)2007-11        |                             |     |   |         |

| Pos. | Artikel-Nr. | Menge | Variante                                     | Notes |
|------|-------------|-------|--|-------|
|      | 128338486   | 1     | Front cover MC 1C with print                 |       |
|      | 128502078   | 1     | HANDLE TUBE AND ACC STORAGEAccessory storage |       |
|      | 128502079   | 1     | HOSE STEEL ARMED 10MHose steel arm 10m       |       |
|      | 128338492   | 1     | Switch knob                                  |       |
|      | 128338493   | 1     | Rotary cable hook                            |       |
|      | 128338494   | 1     | Handle grip                                  |       |
|      | 128338495   | 1     | Male quick coupling                          |       |
|      | 128338496   | 1     | Water inlet NA01                             |       |
|      | 128338497   | 1     | Handle lock button                           |       |
|      | 128338498   | 1     | Wheel Rim Large Nilfisk                      |       |
|      | 128338537   | 1     | Wheel center cap                             |       |
|      | 128338547   | 1     | Swith box cover with print                   |       |
|      | 128338488   | 1     | Accessory storage                            |       |
|      | 128338481   | 1     | Hose steel armed 10M                         |       |
|      | 126528620   | 1     | Schlauch, kpl., POSEIDON                     |       |
|      | 106404757   | 1     | ERGO 2000 STD. W/HOSE SWIVEL hellblau        |       |

